

## TECHNICAL INFORMATION

### AW529-1SD Esta



Surface Mounted  
Adjustable

#### Application Description:

- Surface Mounted, Adjustable
- Interior Areas; Rotational and Tilt Option Requirements
- Residential Living, Reception Areas, Corridors, Exit Lift Entries, Retail and Hospitality, Applications

<b>Product Name</b>	<b>ESTA</b>
<b>Description</b>	Slimline Cylindrical Ceiling Mounted 10° Tilt and 350° Rotatable LED Luminaire
<b>Material</b>	Extruded Aluminium Trim and Body, Parabolic Reflector, Clear PMMA Lens Diffuser
<b>Dimensions</b>	Diameter: 84mm; Height: 142mm
<b>Driver</b>	Integral LED Driver
<b>Details</b>	11W COB LED, 3000K or 4000K available, 40° Beam, CRI>80, 875 Luminaire Luminous Flux @ 3000K
<b>IP Rating</b>	IP20
<b>IK Rating</b>	IK04
<b>Installation</b>	Surface Mounted

We reserve the right to make technical changes.

Should you have any enquiries, please consult an Actwell representative. Email: [sales@actwelllighting.com.au](mailto:sales@actwelllighting.com.au)  
34 Mary Parade | Rydalmere NSW 2116 | Australia | T +61 2 9638 3333 | [www.actwelllighting.com](http://www.actwelllighting.com)

## TECHNICAL INFORMATION

### ORDER CODE

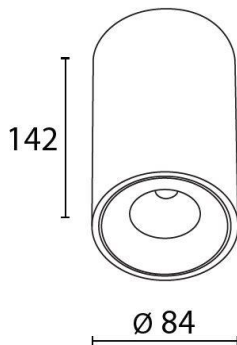
**AW529-1SD-(Colour Finish)-(Temperature)-(Dimming)**

**Example: AW529-1SD-WH-3K-ND**

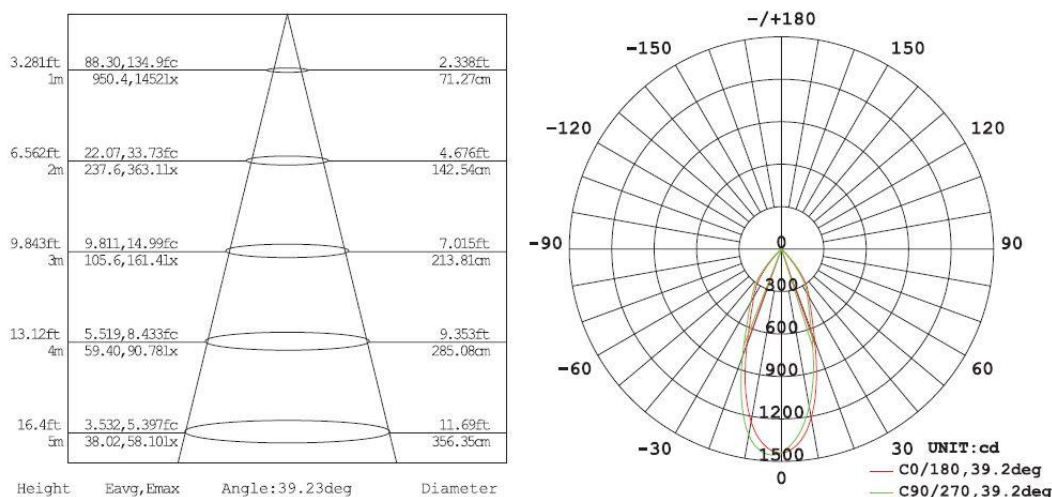
### Options:

Colour Finish	Temperature	Dimming
<b>WH</b> (White)	<b>3K</b> (3000K)	<b>ND</b> (Non-Dim)
<b>BK</b> (Black)	<b>4K</b> (4000K)	<b>PH</b> (Phase)

### Dimensions Line Diagram:



### Photometrics:



We reserve the right to make technical changes.

Should you have any enquiries, please consult an Actwell representative. Email: [sales@actwelllighting.com.au](mailto:sales@actwelllighting.com.au)

34 Mary Parade | Rydalmere NSW 2116 | Australia | T +61 2 9638 3333 | [www.actwelllighting.com](http://www.actwelllighting.com)

### Product Application Photos:

---



---

We reserve the right to make technical changes.

Should you have any enquiries, please consult an Actwell representative. Email: [sales@actwelllighting.com.au](mailto:sales@actwelllighting.com.au)  
34 Mary Parade | Rydalmere NSW 2116 | Australia | T +61 2 9638 3333 | [www.actwelllighting.com](http://www.actwelllighting.com)