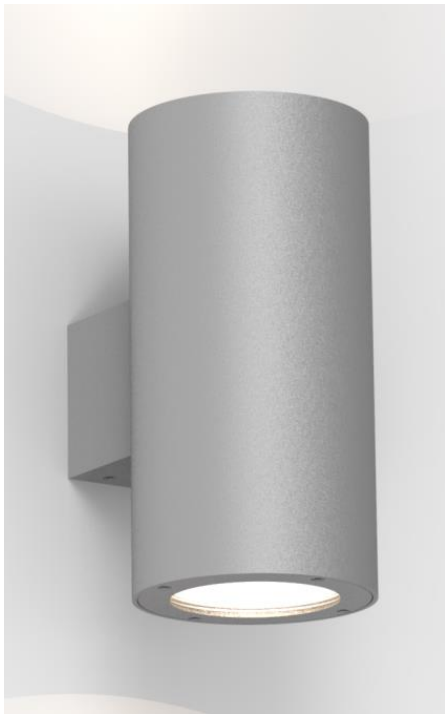


TECHNICAL INFORMATION

AW6301-1EW Hyperion R



Wall Mounted
Fixed

Application Description:

- Wall Mounted, Fixed
- Interior and Exterior Areas; Higher Ambient Lux Level Requirements
- Residential Areas with High Walls, Commercial Offices, Lobby Entries, Retail and Hospitality, Shopping Centers, Education and Medical Buildings, Transport Facilities, Storages and Warehouses, Airport Applications

Product Name	HYPERION R
Description	High Powered, Weatherproof, Vandal Resistant, Up and Down, Cylindrical LED Wall Light
Material	Extruded Aluminium, High Corrosion Resistance, 4mm Tempered Glass
Dimensions	Height: 350mm; Width: 210mm; Projection: 150mm
Driver Details	Integral LED Driver 2 x 30W COB LED, 3000K and 4000K available, CRI>80, 2 x 1540 Luminaire Luminous Flux @ 3000K
IP Rating	IP65
IK Rating	IK08
Installation	Wall Mounted

We reserve the right to make technical changes.

Should you have any enquiries, please consult an Actwell representative. Email: sales@actwelllighting.com.au
34 Mary Parade | Rydalmere NSW 2116 | Australia | T +61 2 9638 3333 | www.actwelllighting.com

TECHNICAL INFORMATION

ORDER CODE

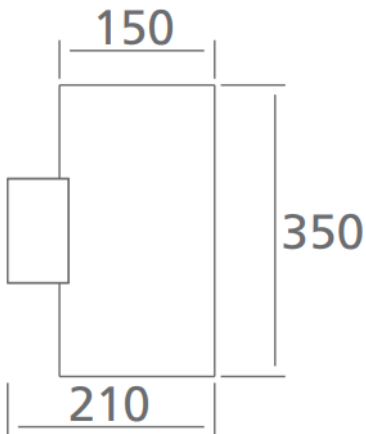
AW6301-1EW-(Colour Finish)-(Temperature)-(Dimming)

Example: AW6301-1EW-BK-3K-ND

Options:

Colour Finish	Temperature	Dimming
WH (White)	3K (3000K)	ND (Non-Dim)
GR (Grey)	4K (4000K)	
BK (Black)		

Dimensions Line Diagram:



We reserve the right to make technical changes.

Should you have any enquiries, please consult an Actwell representative. Email: sales@actwellighting.com.au

34 Mary Parade | Rydalmere NSW 2116 | Australia | T +61 2 9638 3333 | www.actwellighting.com