

ACTWELL

LIGHTING



TECHNICAL INFORMATION
AW5001L GENIE FLEX 1617 TOPVIEW

APPLICATION AREA



Aged Care



Child Care



Corridors



Landscaping



Commercial



Galleries and Museums



Hospitality



Hospitals and Medical



Hotels



Residential



Retail



Shopping Centers



Kitchen and Bathroom
Joineries



Sports centers



Swimming pools



Manufacturing and
Warehousing



Theatres



Educational Facilities



Ceiling Soffits



Kitchen and Bathroom
Cabinetries



Under Handrails



Seat Lighting



Display Shelves

Actwell Trading reserves the right to make revisions and updates.
If you have any enquiries please consult an Actwell Lighting Representative



34 Mary Parade
Rydalmere NSW 2116 Australia



+61 2 9638 3333



enquiries@actwellighting.com.au

PRODUCT NAME	
GENIE FLEX 1617 TOPVIEW	
Description	Flexible Neon with Full Colour and Animated Range, Side or Top Bending Option, for Small Signage App, Slimline, Flat Diffuser, Seamless and Non-Dotting, Corrosion/Solvents/Flame/ UV Resistant, LED Ribbon Internal or External Areas: Linear Light Spread Uses, Waterproof, High Durability, RGBW and Bending Requirements
Materials	Flexible PVC Body, Injection Moulded Caps and Connectors, Aluminium/Plastic Locking Clip/Channel, UV Resistant Spray Coating
Dimensions	Width: 16mm, Height:17mm (Allowance for Clip: 21mm Width, 22.5mm Height)
Driver	24Vdc Constant Voltage Remote Driver
Luminaire Details	7 / 12 / 16.5 / 22 W/m SMD LED, Beam Angle: 160°, CRI>80/90, 50- 850 Luminaire Luminous Flux per meter at 3000K
Ratings	IP68 IK08
Rated Life	5 Year Warranty
Installation	Surface Mounted, Vertical / Horizontal Bending Surface Mounted, Recessed Within Mounting Clips or Channels

Actwell Trading reserves the right to make revisions and updates.
If you have any enquiries please consult an Actwell Lighting Representative

ORDER CODE

AW5001L-(Colour)-(Bend)-(Length)-(Wattage)-(CRI)-(IP Rating)-(Cable Input)-(Dimming)

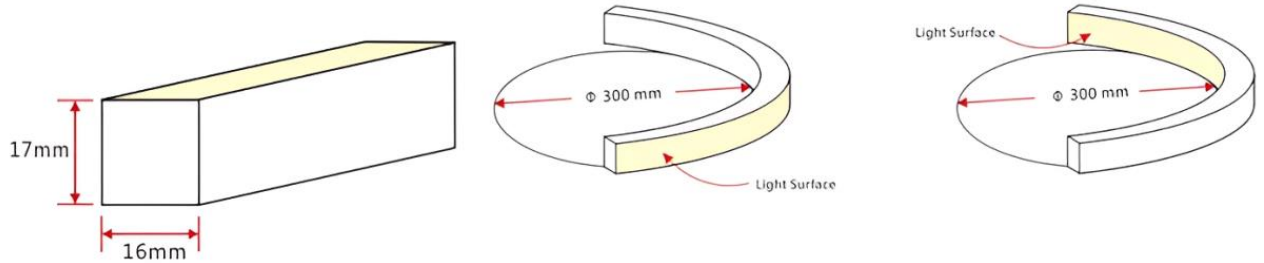
Example: AW5001L-RGB-VB-8340-7W-80-IP68-End-ND-A1000(6x) +A35(20x)

OPTIONS

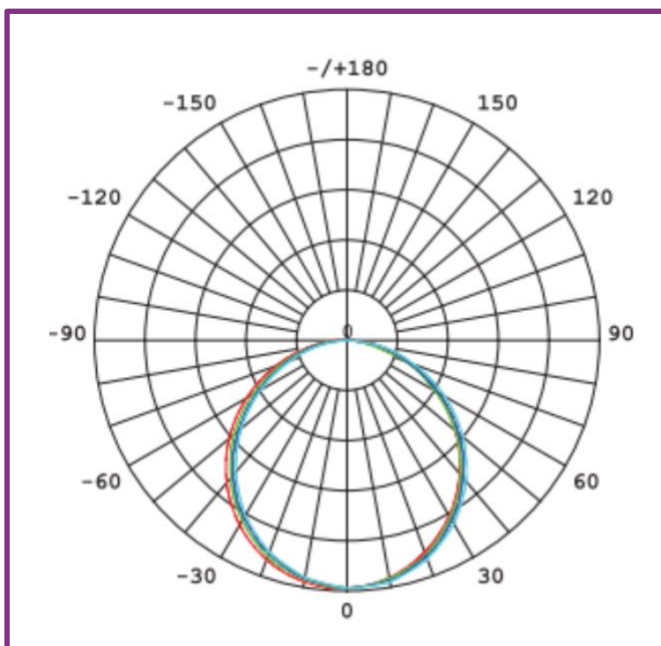
Colour	Bend	Wall to Wall Length	Watt	CRI	IP	Cable Input	Dimming	Clips (Advise Qty)
Single Red, Single Green, Single Blue	VB (Vertical Bend) Custom	Custom (per 55.6mm)	7W	80	IP20	End (Cable Enters End)	ND (Non-Dim)	A35 (Aluminium 35mm)
RGB (Red, Green, Blue)	HB (Horizontal Bend)		12W	90	IP65	Side L (Cable Entry Left)	DD (DALI)	A500 (Aluminium 500mm)
RGBW (RGB + White)			16.5W		IP68	Side R (Cable Entry Right)	DM (DMX)	A1000 (Aluminium 1000mm)
RGBA (RGB + Animation)			22W			Bottom (Cable Entry Below)	DS (DSI)	A2000 (Aluminium 2000mm)
2.7K (2700K)							11 (1-10V)	P500 (Plastic 500mm)
3K (3000K)								P1000 (Plastic 1000mm)
4K (4000K)								P2000 (Plastic 2000mm)
5.7K (5700K)								

Actwell Trading reserves the right to make revisions and updates.
If you have any enquiries please consult an Actwell Lighting Representative

DIMENSION LINE DIAGRAM

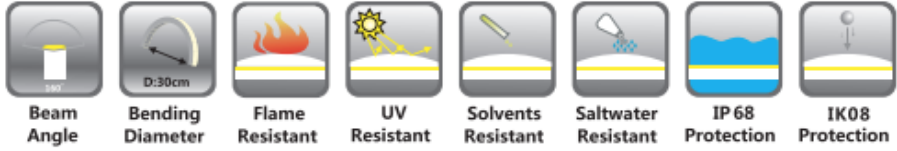


PHOTOMETRICS

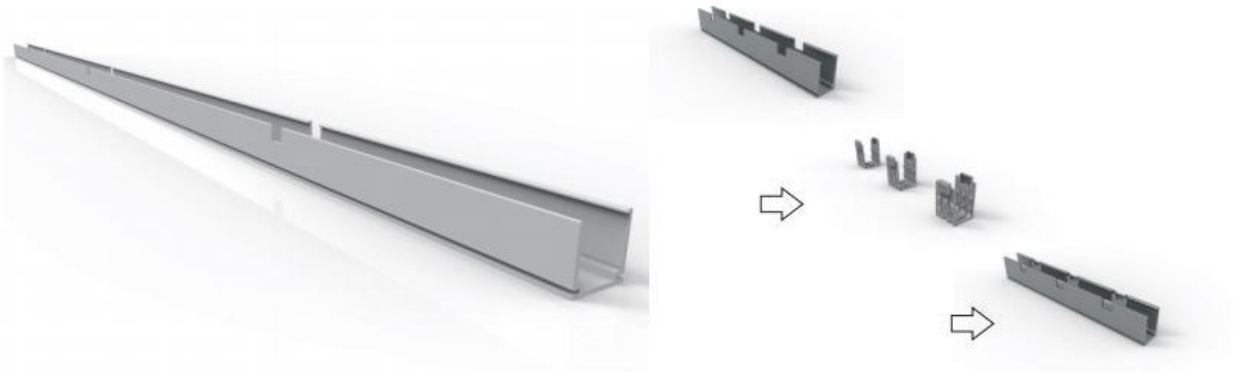


Actwell Trading reserves the right to make revisions and updates.
If you have any enquiries please consult an Actwell Lighting Representative

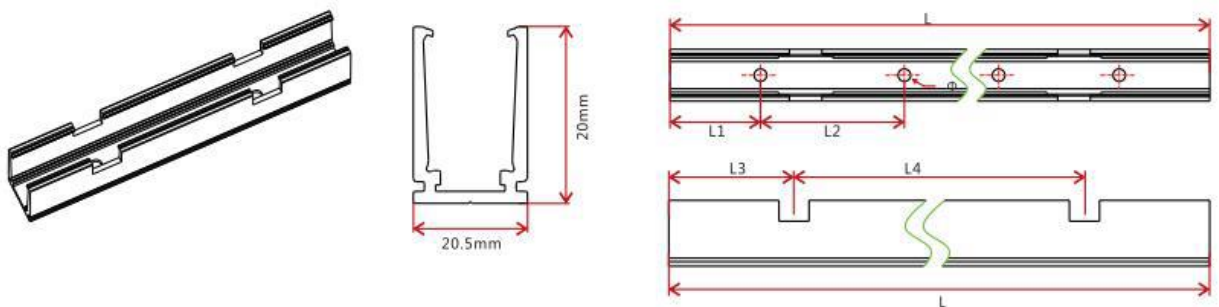
FEATURES AND OPTIONS



EXTRUSIONS (ALUMINIUM OR PLASTIC)



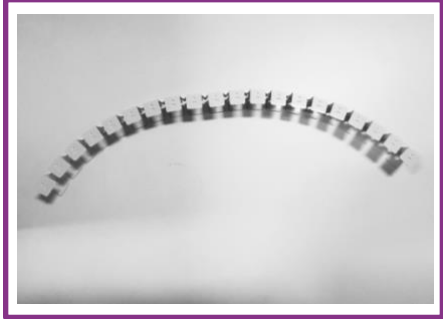
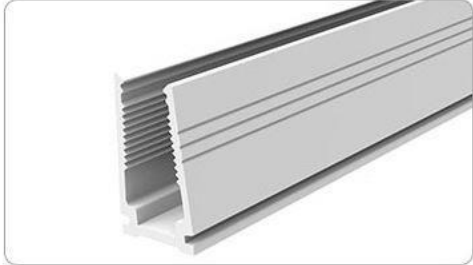
Dimensions



Actwell Trading reserves the right to make revisions and updates.
If you have any enquiries please consult an Actwell Lighting Representative

EXTRUSIONS CONT

FLEXIBLE CHANNELS



Length:49mm; Width:18mm; Height:18mm

W*H(mm)	Standard Length(L : mm)	L1(mm)	L2(mm)	L3(mm)	L4(mm)	Hole Screw(Φmm)	Hole Number	Clip Number
20.5*20	35	17.5	/	17.5	/	Φ3.5	1	1
	50	25	/	25	/	Φ3.5	1	1
	500	100	/	150	200	Φ3.5	2	2
	1000	100	250	150	350	Φ3.5	4	3
	2000	100	250	125	350	Φ3.5	8	6

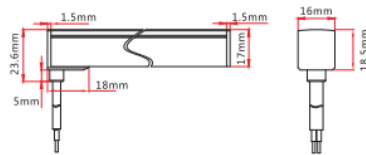
CABLE ENTRY OPTIONS

Injection-moulded Connector



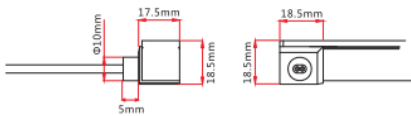
Injection-moulded Front Connector (bottom)

Connects light to power supply with bottom cable entry, IP68. Available in 0.3m, 1m, 3m, 5m, 10m, 15m, 20m lengths.



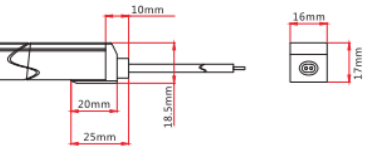
Injection-moulded Front Connector (side)

Connects light to power supply with side cable entry, IP68. Available in 0.3m, 1m, 3m, 5m, 10m, 15m, 20m lengths.



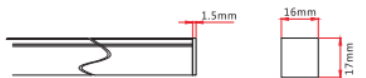
Injection-moulded Front Connector (end)

Connects light to power supply with end cable entry, IP68. Available in 0.3m, 1m, 3m, 5m, 10m, 15m, 20m lengths.

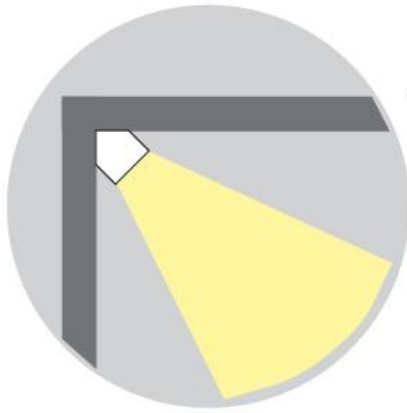


Injection-moulded End Cap

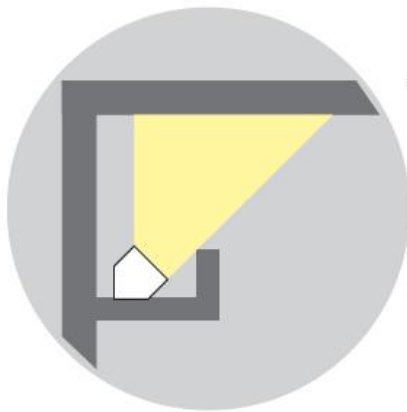
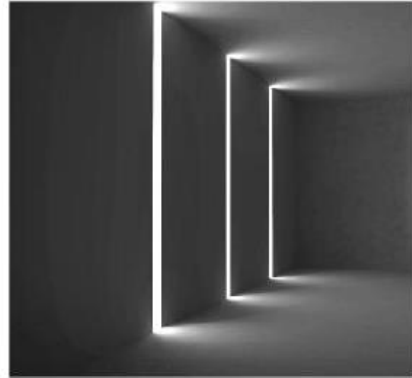
Termination protection of the light, IP68.



Actwell Trading reserves the right to make revisions and updates.
If you have any enquiries please consult an Actwell Lighting Representative



Outline lighting



Groove lighting



Cornice lighting



Actwell Trading reserves the right to make revisions and updates.
If you have any enquiries please consult an Actwell Lighting Representative

PRODUCT APPLICATION PHOTOS



Actwell Trading reserves the right to make revisions and updates.
If you have any enquiries please consult an Actwell Lighting Representative